

LK-HOT CHAMBER DIE CASTING MACHINE

DC30-DC400



AVIS-11
Series

*Technology and precision engineering
to shape the future*



Website: www.lktechnology.com

LK-AVIS-II series

HOT CHAMBER DIE CASTING MACHINE

The first AVIS hot chamber die casting machine was produced in 1994 representing high quality, professional and high efficiency die casting. AVIS-II has more high standard features with latest technology, which are able to fulfill high requirements on die casting industry nowadays. Thousands of AVIS and AVIS-II machines are now serving different customers worldwide and AVIS-II will be a partner for success.

ENERGY SAVING
ADVANCED CONTROL

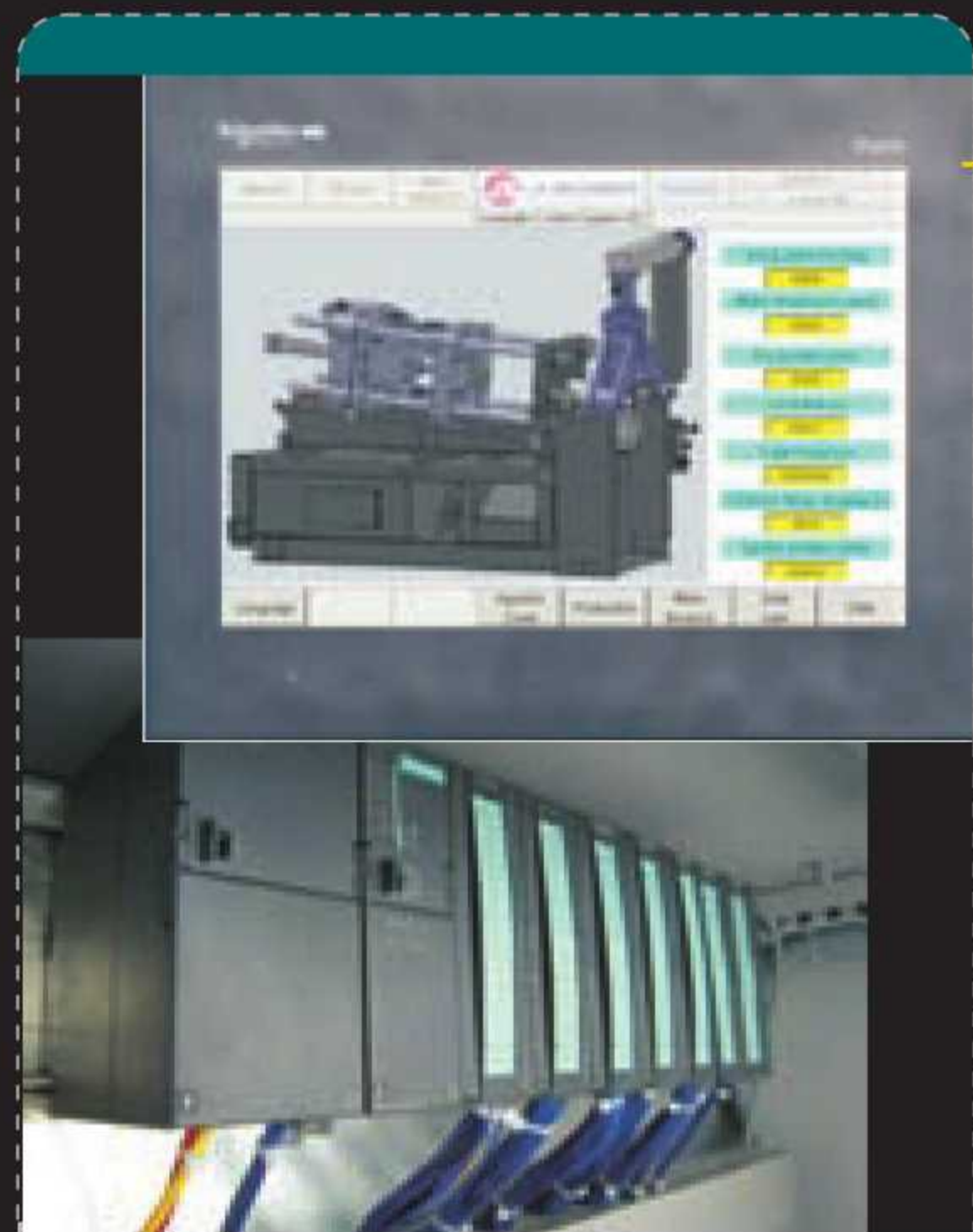
PROFESSIONAL



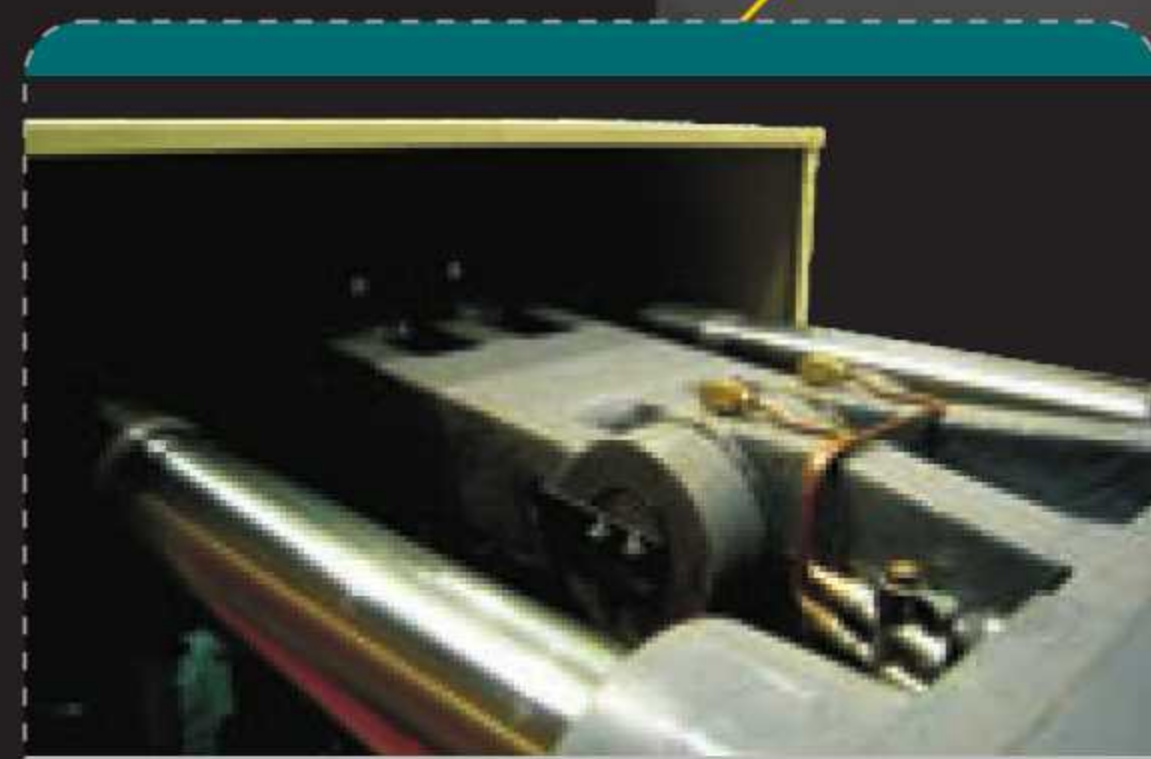
Strong Casting Platen
with gear type hydraulic driven die height adjust mechanism, makes clamping unit durable and remarkable for die-casting.



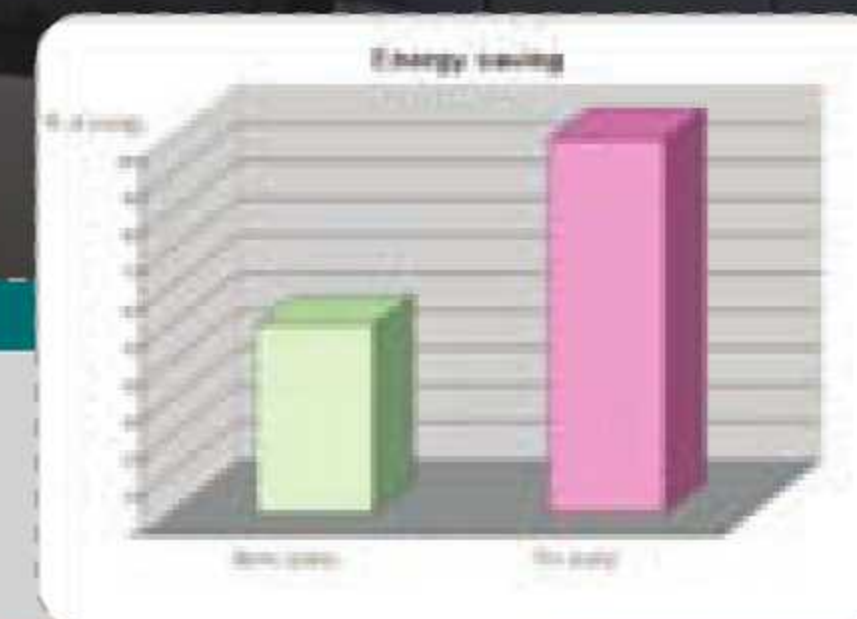
Professional Injection system
Equips with piston type accumulator and proportional injection control, the injection can achieve 5 m/s or above with two stage speed control and easy injection setting.



Control System
Advanced PLC with large size touch LCD ensures reliable and easy operation.



Centralized automatic toggle lubrication system
Ensures fixed volume of lubricant is delivered to each toggle moving joint, result in a long working life and reduce maintenance.



Servo motor driven pump
Provides high performance on pressure and flow control, and keep energy consumption to extremely low.

Standard features

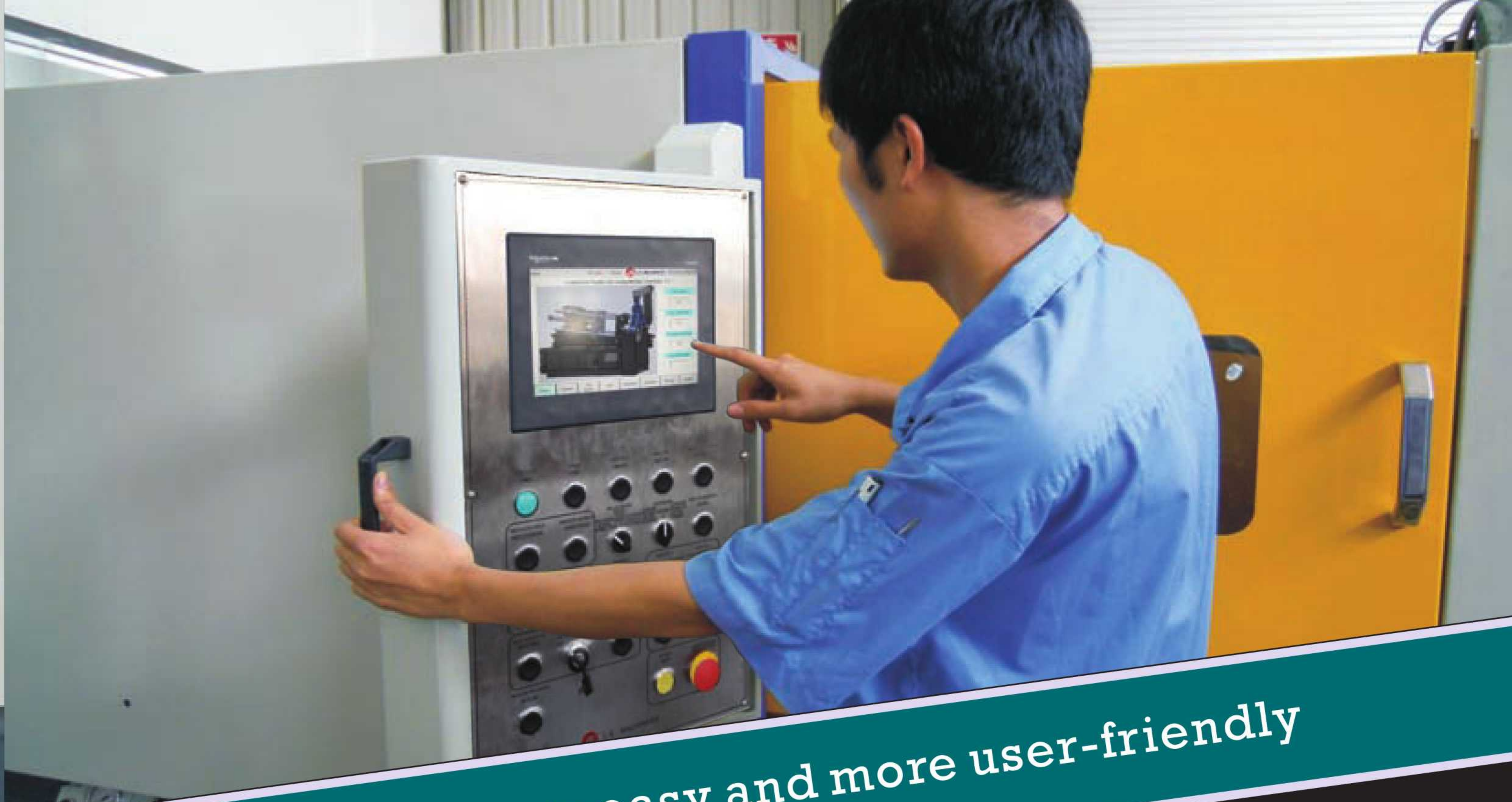
- Safety doors
- Hydraulic ejector
- Hydraulic nozzle engagement
- Electrical heating nozzle, gooseneck
- Electrical heating furnace



Multi shot-position
Offers more flexibility for die design and production, fits nowadays production model.



Excellent hydraulic system with proportional pressure and flow control for best performance.



Operation is more easy and more user-friendly

ADVANCED CONTROL

ENERGY SAVING

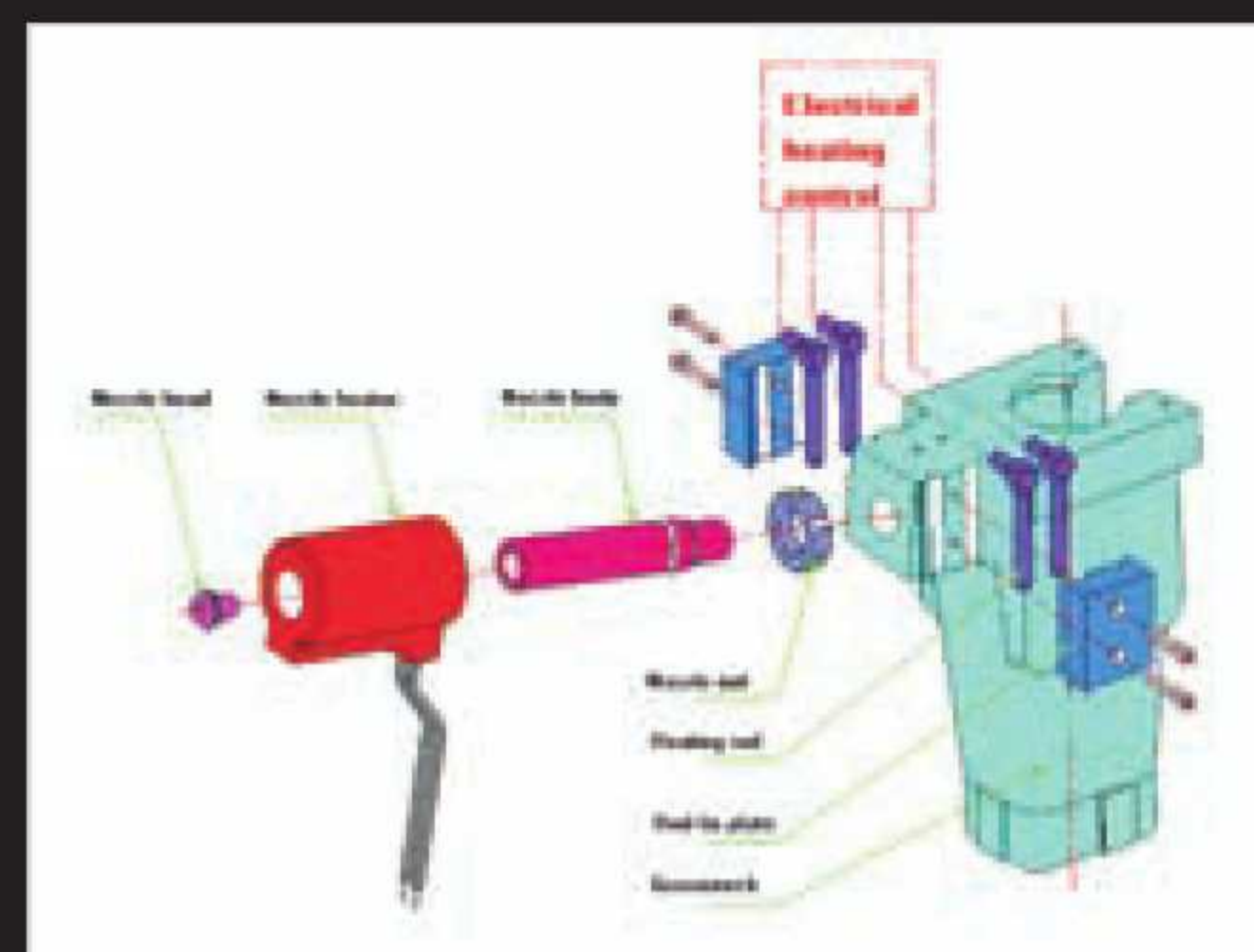


The servo motor driven pump has extremely high response rate and provides high precision pressure and flow control which can save 50% or more energy compared with standard motor.



High efficient tubular type heat exchanger is equipped on the AVIS-II can avoid blockage of cooling water channels and hence reduce maintenance.

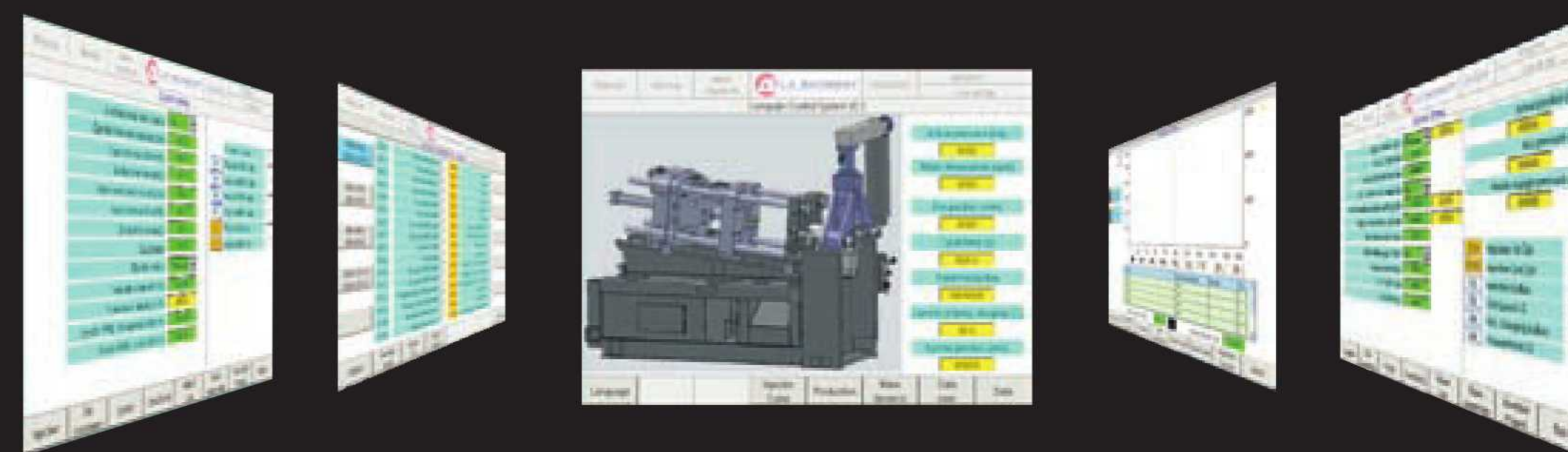
PROFESSIONAL



Professional injection system with electrical heating nozzle and gooseneck ensures quality castings and long working life.



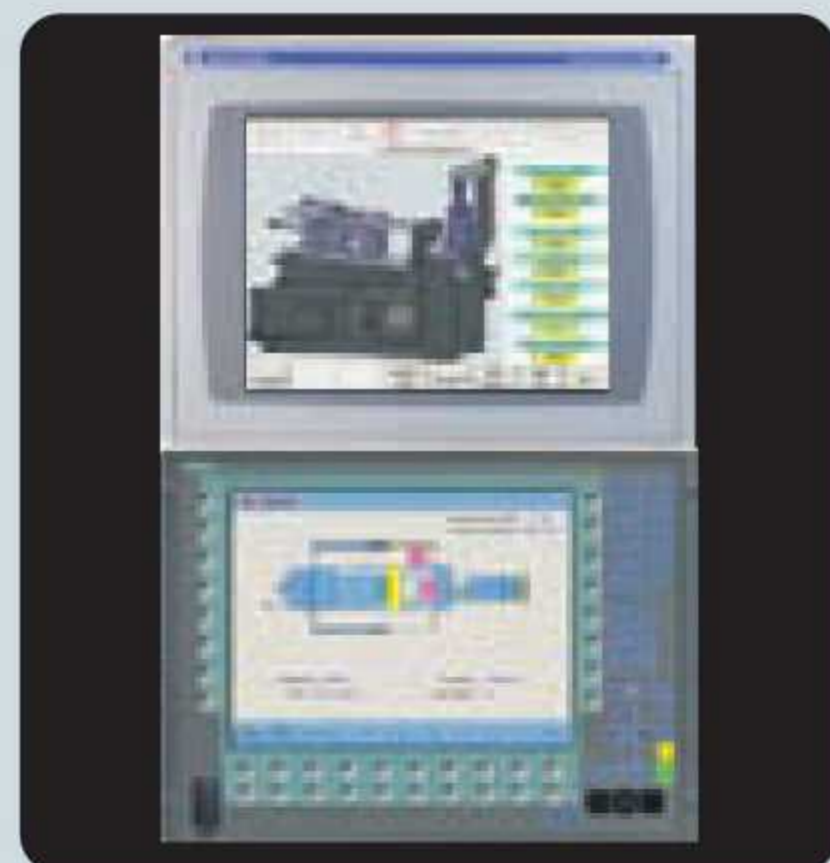
Fixed spraying nozzles are effective tool for good casting



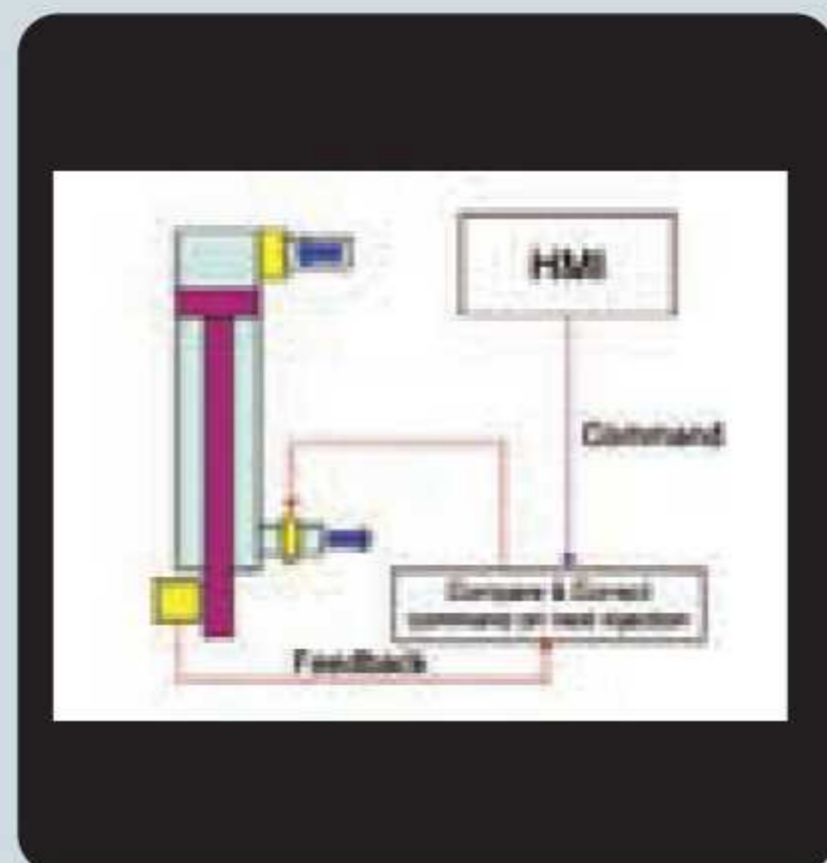
The AVIS-II has equipped with 10" touch LCD, allow operator to work more easy, and lots of data are available on the screen which are required by nowadays high requirement production and process control.

	CLASSIC-III	AVIS-II
CONTROL	7" LCD	10" LCD
Gear type die height adjustment	Standard	Standard
Hydraulic ejector	Standard	Standard
Hydraulic nozzle engaging	Standard	Standard
Piston type accumulator	Standard	Standard
Accumulator charging pressure setting	Analogue	Analogue
Die opening stroke control	Analogue	Analogue
PUMP	Fixed Pump	Servo pump
Fixed spraying nozzle	Option	Option
Standard furnace	Diesel Furnace	Elec. Furnace
Core pulling	Std for DC130 or above	Std for DC50 or above
Pneumatic Sweeper	Option	Option
Hydraulic control	Hand wheel	Proportional pressure & flow control
Injection curve display	Option	Standard

OPTIONS



Advanced controller with professional die-casting control software.



LK Smart Injection Control System



Hydraulic Tie Bar Extraction



LK Real Time Injection Control system



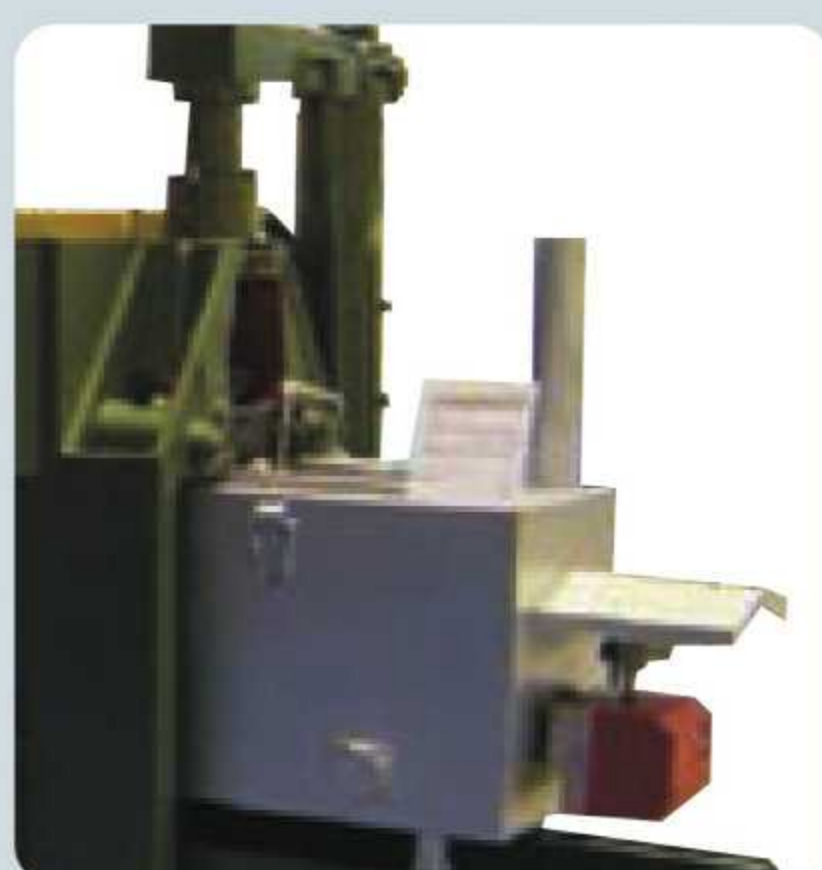
Air Conditioner for the control cabinet



Pneumatic Sweeper for casting removal



Quick Die Change System



Gas or Diesel heating furnace replace electrical furnace



Immerse type electrical heating device for furnace



U.S./CE Standards

- Extra Core pull
- Auto Safety door
- Clamping force monitoring
- Separate plate for furnace
- Double chamber furnace
- LK Net System

Additional Options

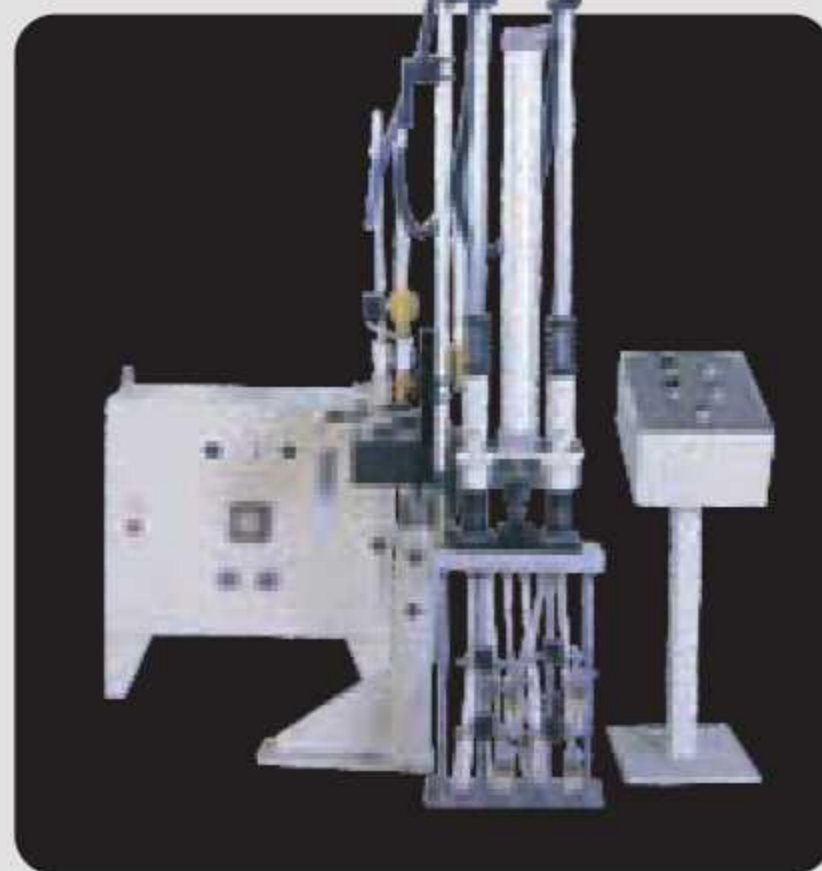
PERIPHERALS



Automatic Ingot loader



Automatic Extractor



Automatic Sprayer



Servo Robot for extracting



Hydraulic Trim Press (Able to interface with Robot Arm)



Automatic Portering system (central furnace)



Conveyor



Electrical casting scale



Die Temperature Controller



Pressurized Tank